

















# Walking side by side



**Building mutually beneficial working  
relationships in the community**



# Whakarongo mua korero

**The biggest communication problem is that often we don't listen to understand**



**We often listen only to reply**



**Tatai whenua, tatai tangata, tatai ora**



**Connecting the land, the people and their wellbeing**



## ***Whanaungatanga***

- *All embracing relationships*
- *Working with others to make a difference*
- *Trust and respect are paramount*



## ***Kaitiakitanga***

- *An intimate relationship with the environment*
- *The health of a community is reflected in its environment*
- *Building relationships & empowering people as guardians of our environment is vital*





## Mataia Farm Land Management Plan

A farming family working in partnership with iwi and the community to bring kiwi back to the Kaipara

Sheep, beef, dairy, a sand quarry and  
**KIWI**







APPROX  
SIZES.

"HOOPERS"  
BLOCK  
(33 ha)

CABBAGE  
TREES  
(8 ha)

SALT MARSH  
& MANGROVES  
(300 ha)

MANUKA  
DOMINATED  
BUSH  
(97 ha)

PA

MATAIA  
HOMESTEAD

PINES

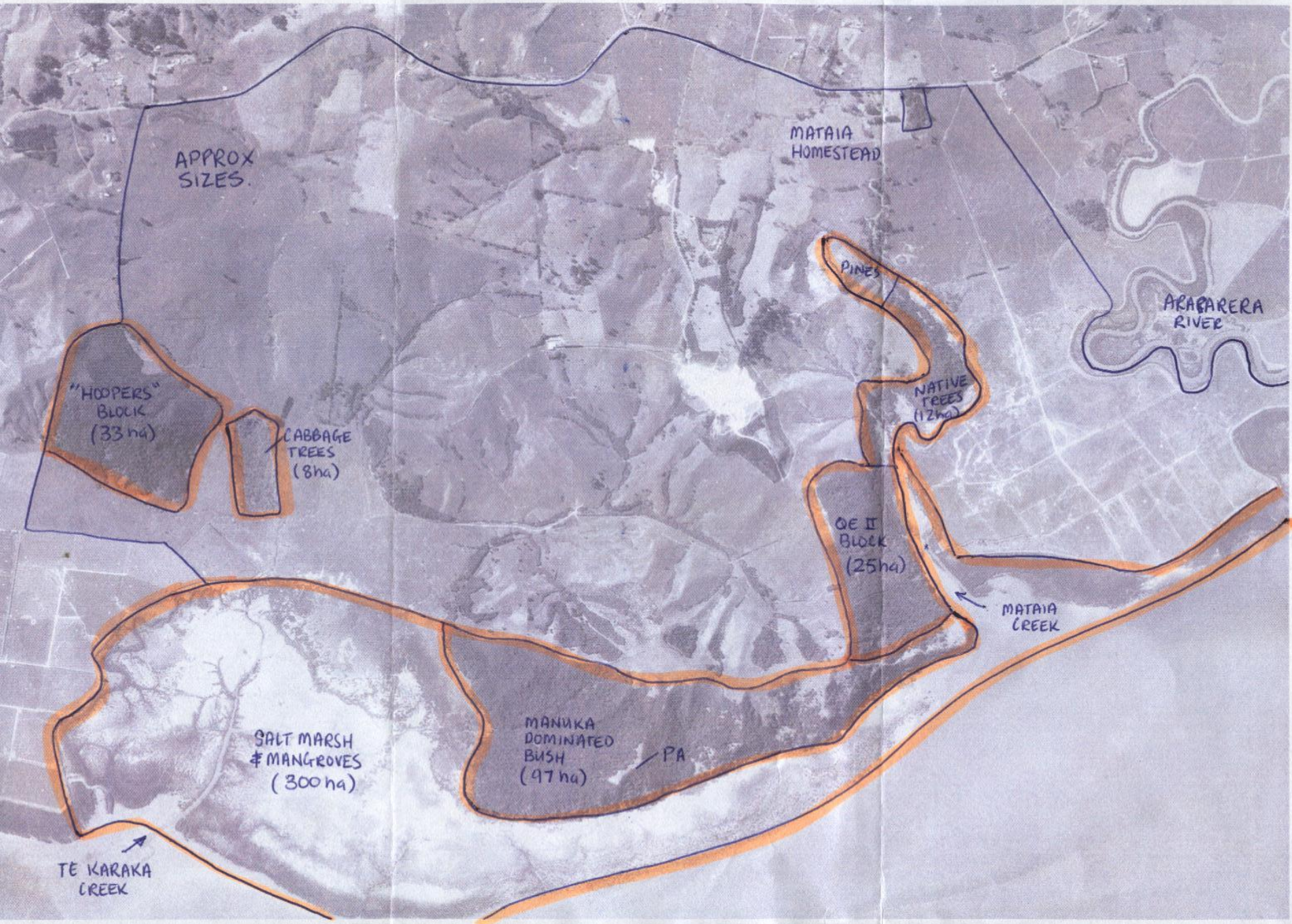
NATIVE  
TREES  
(12 ha)

QE II  
BLOCK  
(25 ha)

MATAIA  
CREEK

ARARARERA  
RIVER

TE KARAKA  
CREEK

















**The Gardner family got stuck in and got on with it. They expanded their pest control, fenced & planted stream margins, worked with their neighbours to do the same**

**Every successful partnership needs to be fed and rewarded. In 2011 we brought kiwi back to the Kaipara – after 50 years absence – now over 40 birds are present**



**The proof of the passion people have for this family & their project was evident in the 650 people who came**

**And now we are looking towards doing the same on 100,000ha.... With the establishment of the Forest Bridge Trust**



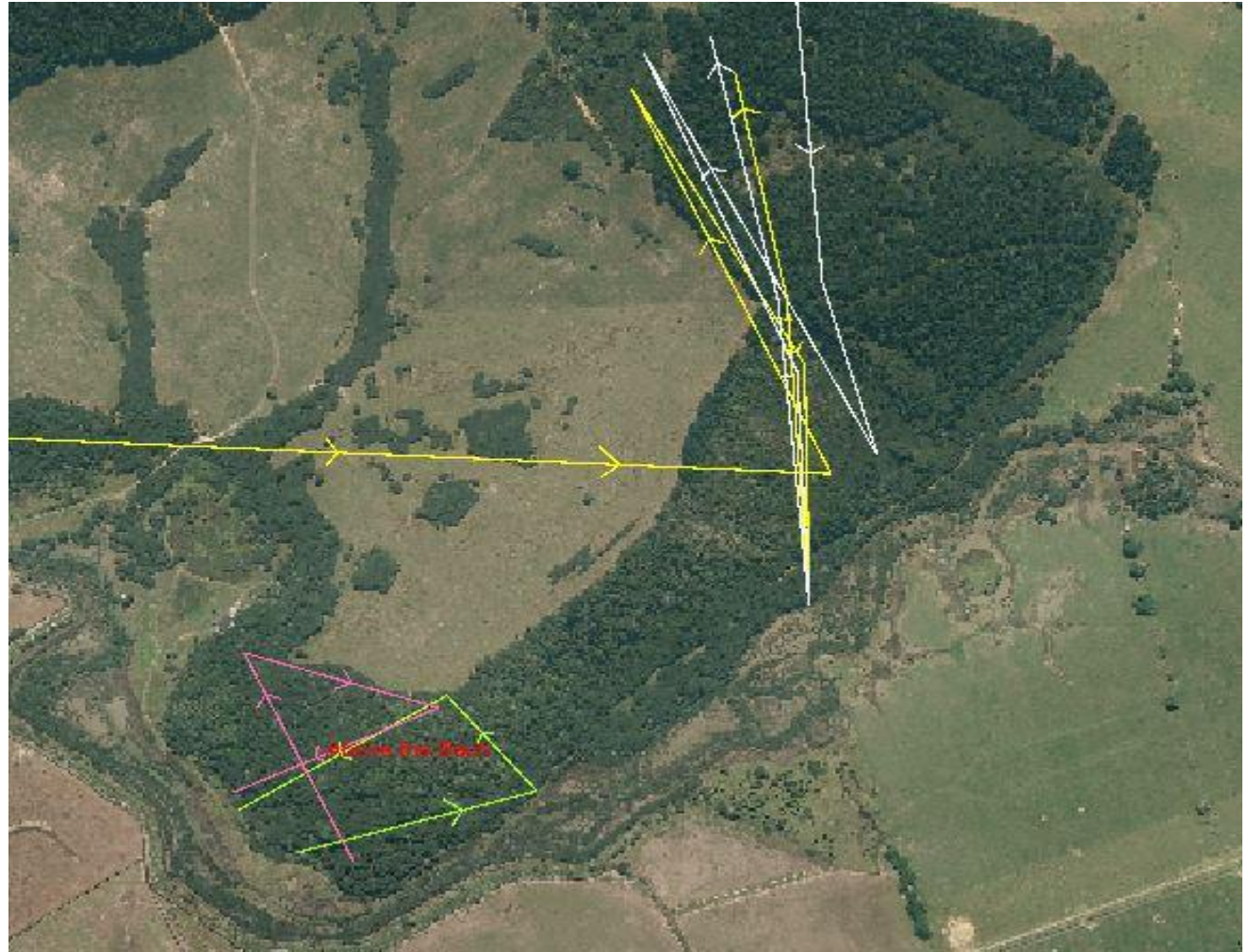






<http://www.naturespace.org.nz>

## Everyone can track the Mataia Kiwi



Charlie, Taranaki, Ako and Pare









K2K KAIPARA TO  
KAIPARA WALK





**Community perceptions on toxins.... Some ways to deal with them  
– empathy goes a long long way**



**Mussel farms along Kaikoura coast – no real information existed  
to satisfy farmers on effects of brodifacoum on mussels**



# The toolbox always works best

**In my experience it's a dual toolbox:**

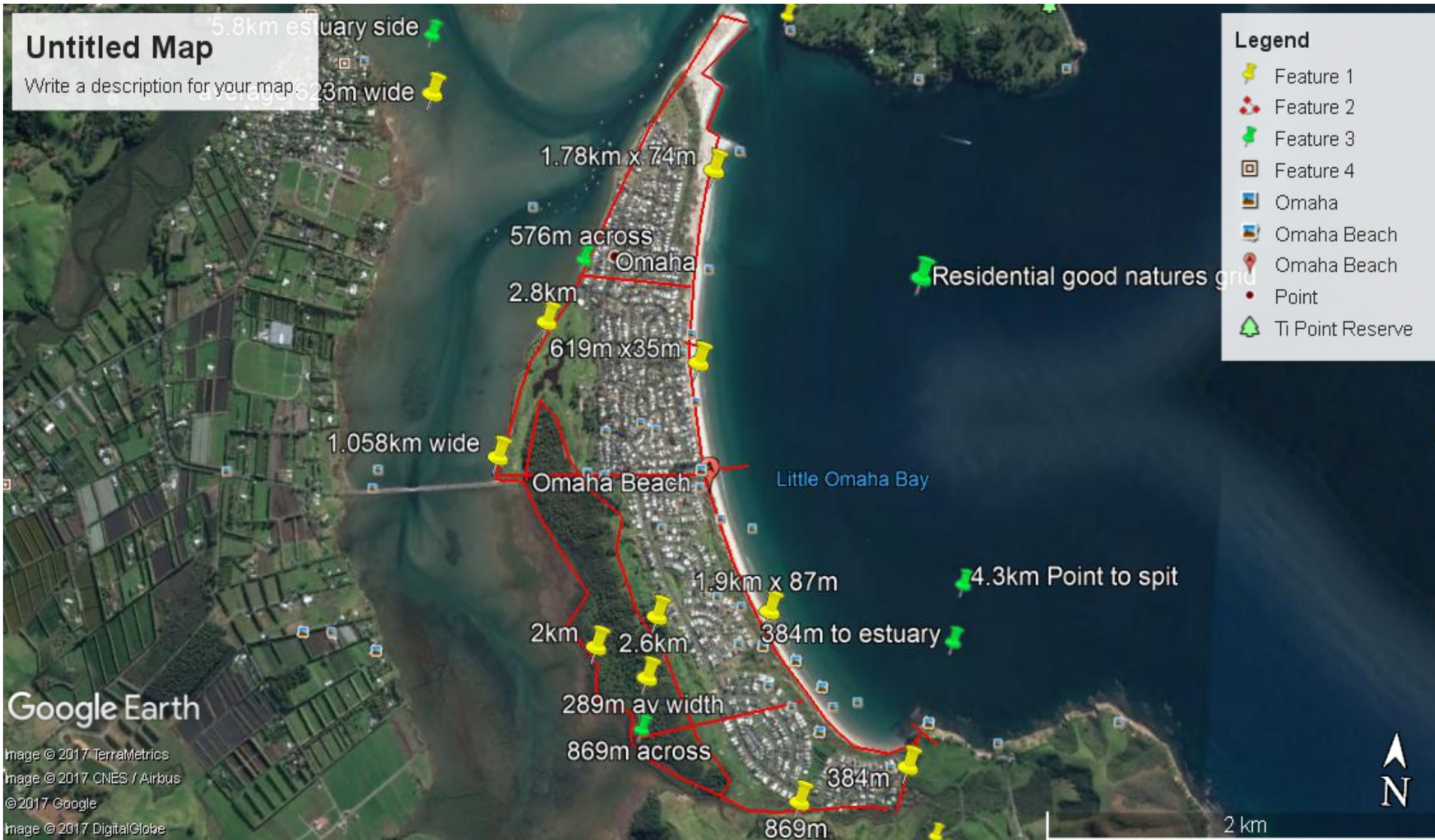
**1 for your pest control/eradication measures**

**1 for social interactions/community support/involvement**

**Which mix of tools you use is a function of the different environments you work in – in a wilderness environment aerial baiting is often the best solution but in an environment where there are people its usually a mix of ground based tools, volunteers, contractors etc**



# PEST FREE OMAHA OR PREDATOR FREE.....



**How best to galvanise a busy community that is focussed on relaxation and leisure – appeal to their passion for the place they love with pragmatic solutions**





**Empathy** is

**Seeing** *with the eyes of another,*

**Listening** *with the ears of another,*

And **feeling** *with the heart of another.*



# Community based translocations



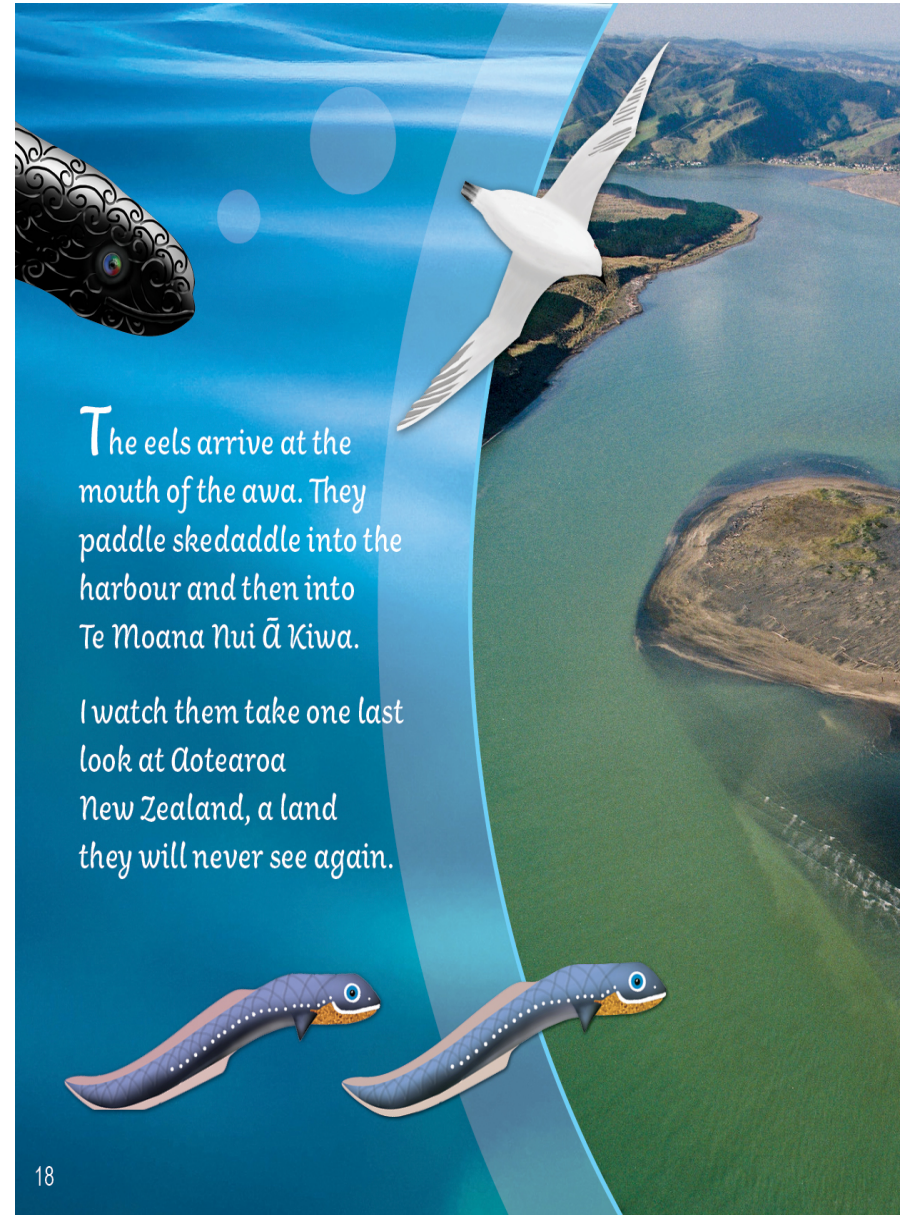
Helping DoC to help ourselves



# "Let's Go Eels"



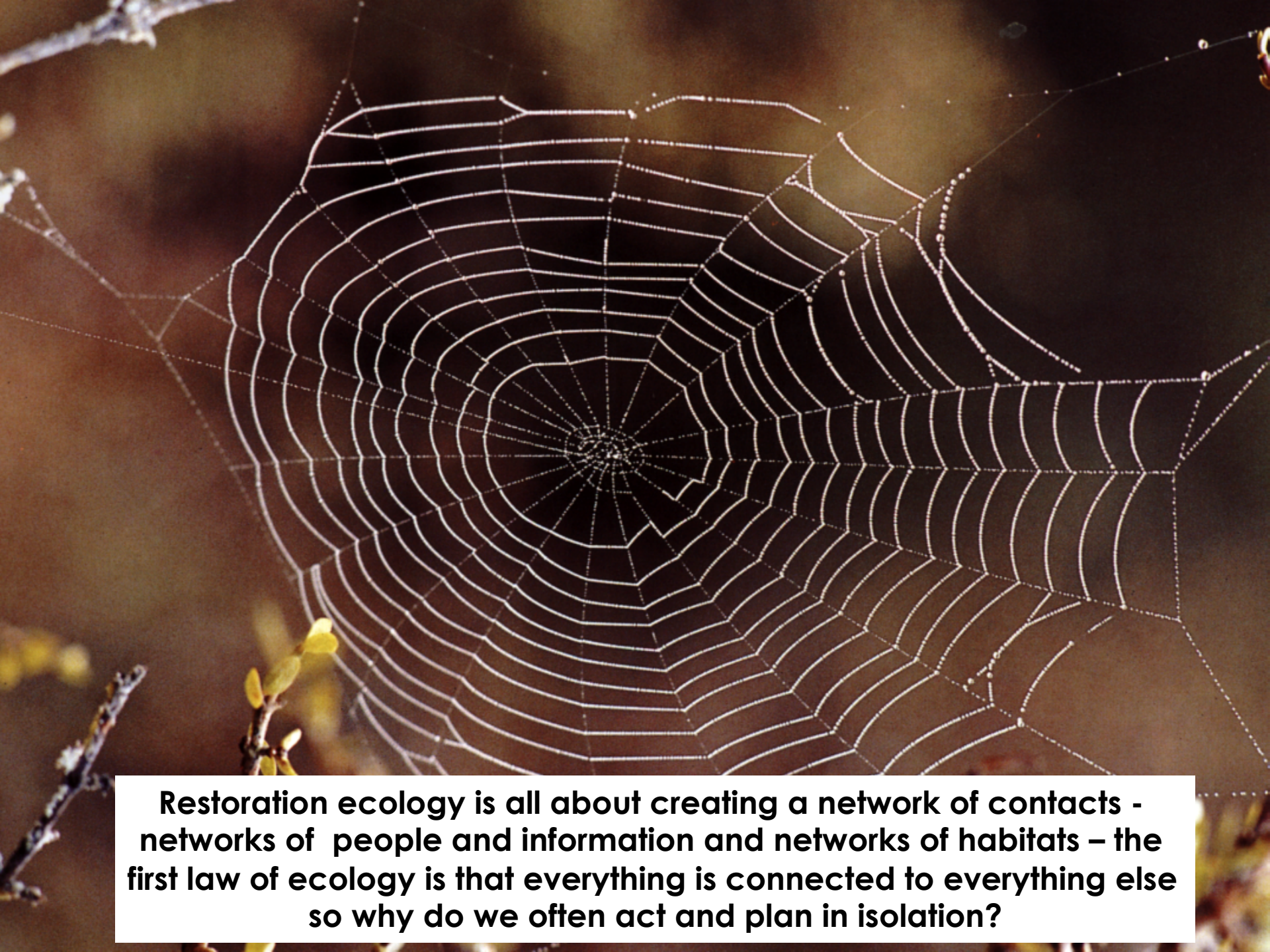
by Robin Kermode  
illustrated by Julie Bourla



The eels arrive at the mouth of the awa. They paddle skedaddle into the harbour and then into Te Moana Nui ā Kiwa.

I watch them take one last look at Aotearoa New Zealand, a land they will never see again.





**Restoration ecology is all about creating a network of contacts - networks of people and information and networks of habitats – the first law of ecology is that everything is connected to everything else so why do we often act and plan in isolation?**





**It's often also about taking a great leap forward and trusting that the community does know what its doing – every single person has something to contribute**





Coming together is a beginning  
Keeping together is progress  
Working together is success



**Always ask others about their perspective first**





# Bottom up planning and decision making not top down





Koekoe te tui, e ketekete te kaka, e kuku te  
kereru



The tui chatters, the parrot gabbles, the wood pigeon coos



**Nāu te rourou, nāku te rourou, ka ora te iwi.**



**With your food basket and my food basket,  
everyone will have enough.**



